

# BAISD Data Warehouse

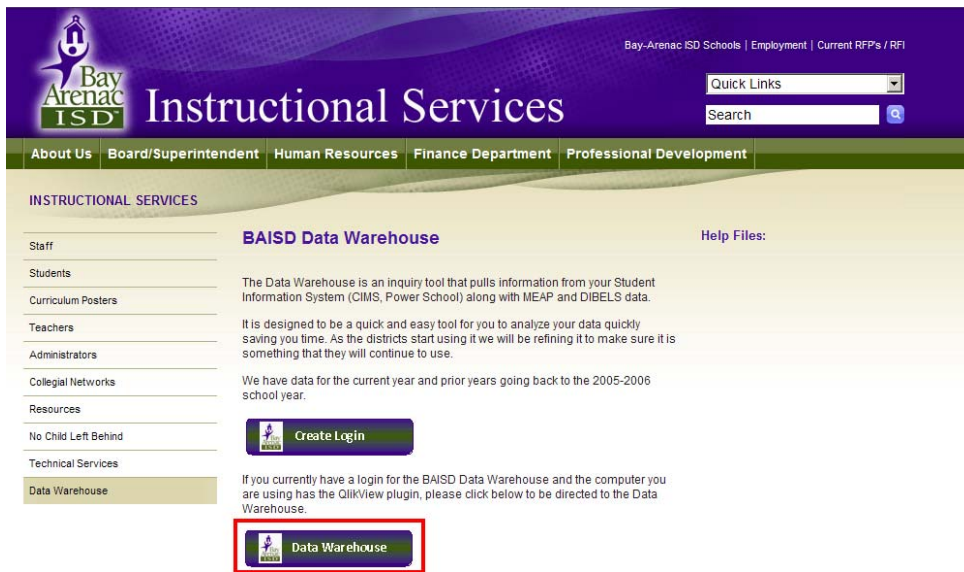
## To access the Data Warehouse:


- Launch Internet Explorer and go to [www.baisd.net](http://www.baisd.net)
- Click on the link for **Instructional Services** then click on **Data Warehouse**.

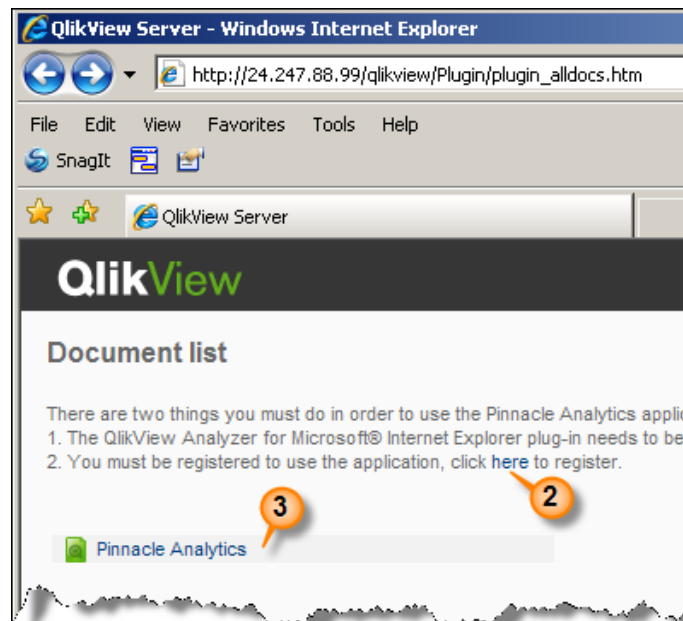
**Note:** If this is your first time using the application you will need to register. This can be done by clicking on the **Create Login** button on the website shown below.

A plug-in for QlikView Analyzer for Microsoft Internet Explorer will also need to be installed. It will automatically download and install when you click on the Pinnacle Analytics. If you already have the QlikView Analyzer for Microsoft Internet Explorer plug-in installed but want to make sure you have the latest version, select the appropriate link on the website shown below.

If you have already have a login, click on the Data Warehouse button on the website shown here.



When this page is opened, click on  **Pinnacle Analytics**




1. This link will download the QlikView Analyzer plug-in for Internet Explorer.
2. This link will take you to the registration page for the Data Warehouse
3. Once you have registered and installed the QlikView Analyzer plug-in. Click on Pinnacle Analytics to launch the application.

### Document list

There are two things you must do in order to use the Pinnacle Analytics application.

1. The QlikView Analyzer for Microsoft® Internet Explorer plug-in needs to be downloaded and installed, click [here](#) to install it.
2. You must be registered to use the application, click [here](#) to register.

 [Pinnacle Analytics](#)

# BAISD Data Warehouse

## Registration:

Anyone requiring access to the Data Warehouse will be required to request a Login. Once the request has been made, they will be able to access the system within 24 hours. A sample of the form is shown below. All fields with an asterisk "\*" must be filled in.

### BAISD Data Warehouse Login Request

**User Information:**

First Name\*:

Last Name\*:

Organization\*:

Title\*:

Address:

City:

Zip:

Phone:  (5551234567)

Email\*:

**District Information:**

Select district you'd like access to.

County:

District:

Building:

**Login Information:**

Login\*:

Password\*:

Password\*:

After filling in the required information, click **Submit**.

Thank you for your request.

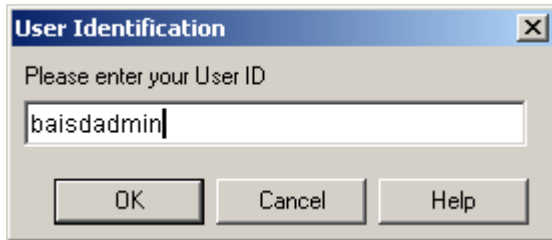
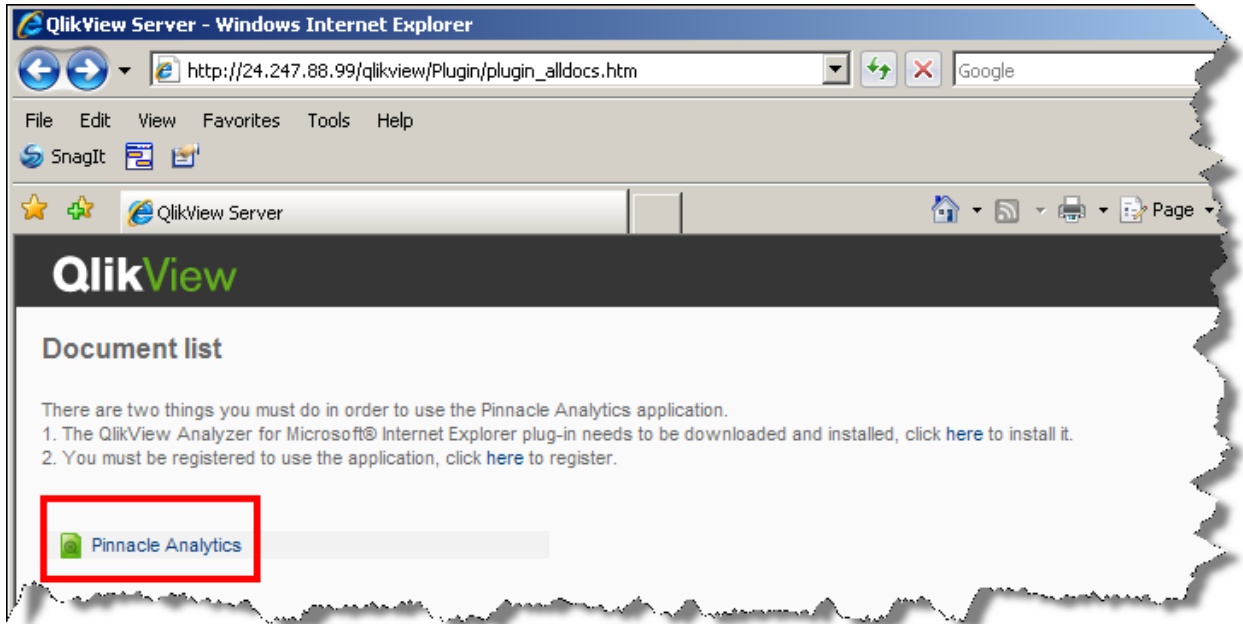
As a security measure there will be a 24 hour waiting period before you have access to the data.

Any questions or concerns may be address to:  
[datawarehouse@baisd.net](mailto:datawarehouse@baisd.net)

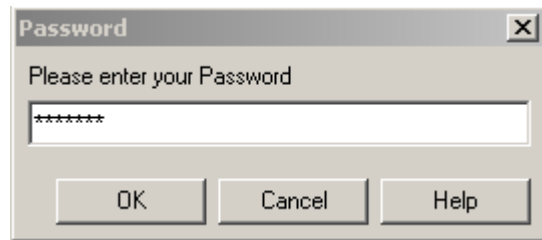
Once your registration has been verified you will be able to access the Data Warehouse.

# BAISD Data Warehouse

When you launch Pinnacle Analytics, you will be prompted for the User ID and Password that you registered in the previous step.



The "User Identification" dialog box is a standard Windows-style window with a title bar containing the text "User Identification" and a close button (X). The main text inside the dialog says "Please enter your User ID". Below this text is a text input field containing the text "baisdadmin". At the bottom of the dialog, there are three buttons: "OK", "Cancel", and "Help".



The "Password" dialog box is a standard Windows-style window with a title bar containing the text "Password" and a close button (X). The main text inside the dialog says "Please enter your Password". Below this text is a text input field containing seven asterisks "\*\*\*\*\*". At the bottom of the dialog, there are three buttons: "OK", "Cancel", and "Help".

# BAISD Data Warehouse

Once you have successfully logged in, you will be presented with the following screen.

The screenshot shows the Pinnacle Analytics dashboard. At the top, there are navigation tabs: Home, Grades, Student, Attendance, MEAP, Discipline, Dibels, Info Map, and How To... The 'Grades' tab is selected, showing filters for Elementary, Middle, and High. Below this, there are years 2006, 2007, 2008, and 2009, with 2009 highlighted in green. On the left, there is a 'Standard Selections' box with dropdown menus for District, School Name, Student Name, Student ID, GradeLevel, Gender, Ethnic Group, Lunch Status, Special Ed Status, Title I Status, LEP Status, Gifted Status, and Section 504 St... Below this is a 'Select Analysis' box with options: Student Count, Count Students by Grade, Count Students by Tch/Crs/Sect, and Count Teachers by School. The main content area displays a 'Welcome to Pinnacle Analytics!' message with instructions: 'Begin by making selections in the Standard Selections box or the Select Analysis box on the left.' and 'First-time users: For a quick overview of the basics, select the "How To..." Tab.' At the bottom, there is a toolbar with buttons: Log Out, Last Reload: 1/2/09, Number of Distinct Student Records: 18,226, Show Selections, Show Bookmarks, Hold Students, and Clear Selections.

Click on the "How To" tab for some general navigational tips.

This is a close-up of the navigation tabs at the top of the dashboard. The tabs are: Home, Grades, Student, Attendance, MEAP, Discipline, Dibels, Info Map, and How To... The 'How To...' tab is highlighted with a red rectangular box.

The screenshot shows the 'How To...' page, which provides various navigation tips. The page is divided into several sections:

- To Make Selections:** To make a selection click on the data value you want to know more about. The selected data value turns green. Values compatible with the selection are white and unrelated values are gray. To select more than one item in the same listbox, hold the CTRL key down while selecting additional values. A legend shows: Selected Data (Green), Unrelated Data (Gray), Associated Data (White), and Locked Data (Blue).
- Clear Selections:** To clear selections click on the "Clear" button in the toolbar at the top of your screen.
- Search:** Click on list box title bar. Start typing the value or number you wish to find. Press enter or click on a value to select. A search box is shown with the text "Searching for" and the input "ges". A dropdown list shows results: Geo. Concepts/Apps, Geom. Concepts(S), Geometry, Geometry Con/App, Geometry 8, and Geometry Con/App.
- Analysis and Reports:** To open an analysis report, select the name of the analysis you wish to complete.
- Cycle & Drill Buttons:** If available, click on cycle button or drill down button to display or drill down to the next variable in the chart. Two icons are shown: a circular arrow and an upward-pointing arrow.
- To Navigate Between Views:** To move between views click on the tabs across the top.
- Support:** For technical support, contact "Pinnacle Analytics" at Excelsior Software, Inc. Contact information: analytics@excelsiorsoftware.com, 1-800-473-4572, 1-970-353-8311.

At the bottom, there is a toolbar with buttons: Log Out, Last Reload: 12/5/08, Number of Distinct Student Records: 18,225.